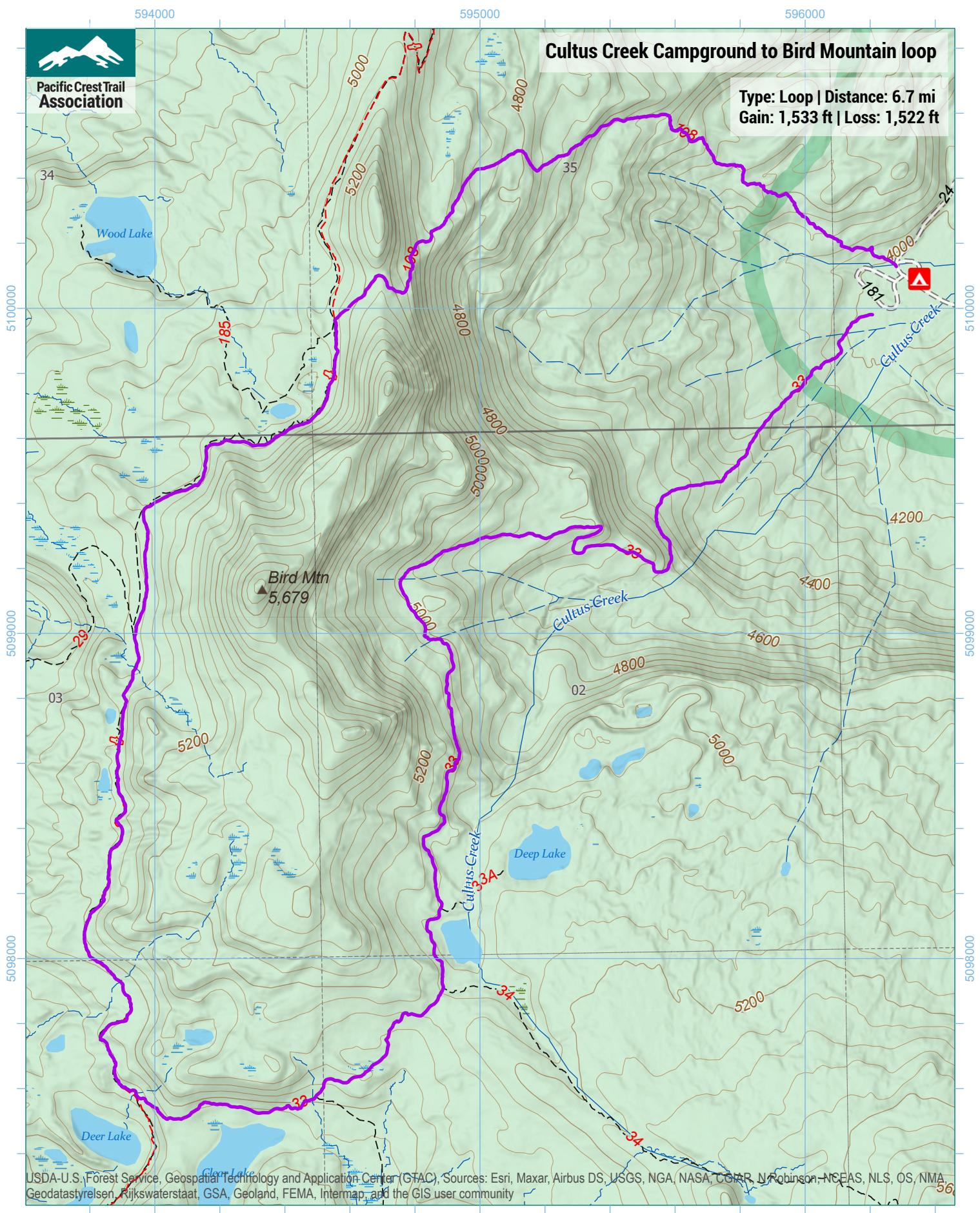


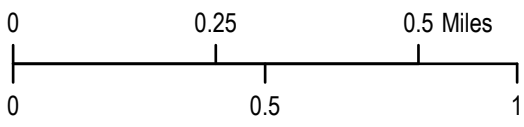


# Cultus Creek Campground to Bird Mountain loop

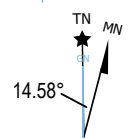
Type: Loop | Distance: 6.7 mi  
Gain: 1,533 ft | Loss: 1,522 ft



USDA-U.S. Forest Service, Geospatial Technology and Application Center (GTAC). Sources: Esri, Maxar, Airbus DS, USGS, NGA, NASA, CGIAR, J. Robinson, NCEAS, NLS, OS, NMA, Geodatastyrelsen, Rijkswaterstaat, GSA, Geoland, FEMA, Intermap, and the GIS user community



1 inch equals 1,250 feet  
1:15,000  
WGS 1984 UTM Zone 10N



Trip data by PCTA  
Basemap by US Forest Service  
Contour interval: 40ft